



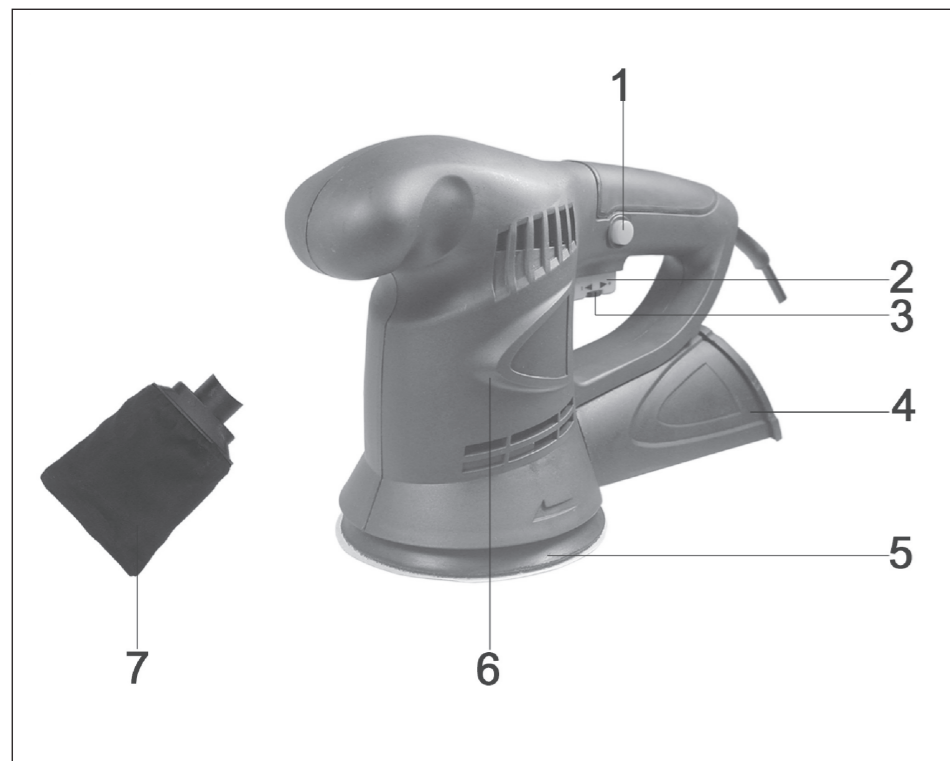
SAFETY AND OPERATING MANUAL

*Thank you for purchasing an Icon product. We are confident that this product will meet and exceed your expectations of quality and reliability. Please take the time to carefully read this entire instruction manual before using your new product. Take note of the safety precautions contained herein.*

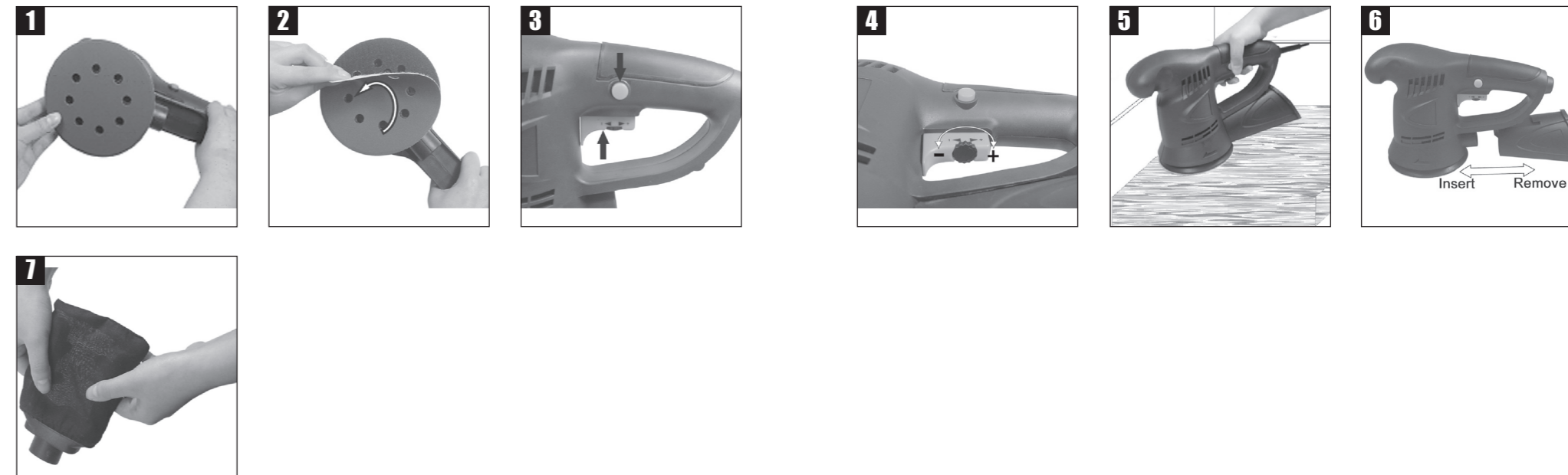
## 300W ROTARY SANDER

ICROS





A



B

C

# Contents

---

I -	Parts list	1
II -	Technical specifications	1
III -	Safety instructions	2
IV -	Symbols	4
V -	Accessories	5
VI -	Operating	5
VII -	Working hints for your sander	6
VIII -	Maintenance	6
IX -	Troubleshooting	6

## I - Parts list

---

1. Switch lock button
2. On/off witch
3. Variable speed wheel
4. Dust box with filter
5. Sanding base plate
6. Motor housing
7. Dust bag

Not all the accessories illustrated or described are included in standard delivery.

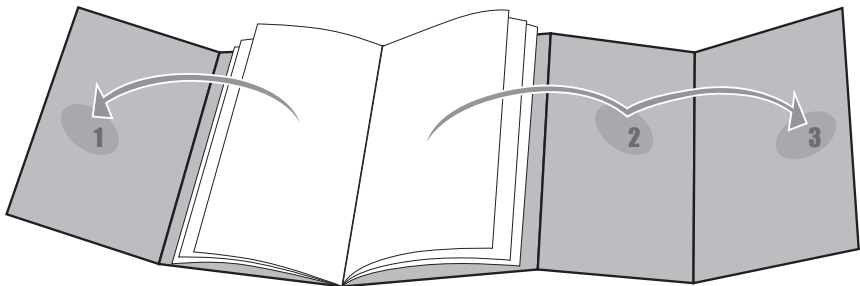
## II - Technical specifications

---

Rated voltage .....	230V-240V~50Hz
Power rating .....	300W
No load speed.....	4000-11000/min
Diameter of base .....	125mm
Protection class .....	□/II
Weight .....	2kg

### NOISE AND VIBRATION DATA

Sound pressure level.....	82.2dB(A)
Sound power level.....	93.2 dB(A)
Vibration level.....	4.25m/s <sup>2</sup>



# III - Safety instructions

**WARNING: Read all safety warnings and all instructions.** Failure to follow the warnings and instructions may result in electric shock, fire and/or serious injury.

**Save all warnings and instructions for future reference.**

The term “power tool” in the warnings refers to your mains-operated (corded) power tool or battery-operated (cordless) power tool.

## 1. WORK AREA SAFETY

- a) **Keep work area clean and well lit.** Cluttered or dark areas invite accidents.
- b) **Do not operate power tools in explosive atmospheres, such as in the presence of flammable liquids, gases or dust.** Power tools create sparks which may ignite the dust or fumes.
- c) **Keep children and bystanders away while operating a power tool.** Distractions can cause you to lose control.

## 2. ELECTRICAL SAFETY

- a) **Power tool plugs must match the outlet. Never modify the plug in any way. Do not use any adapter plugs with earthed (grounded) power tools.** Unmodified plugs and matching outlets will reduce risk of electric shock.
- b) **Avoid body contact with earthed or grounded surfaces such as pipes, radiators, ranges and refrigerators.** There is an increased risk of electric shock if your body is earthed or grounded.
- c) **Do not expose power tools to rain or wet conditions.** Water entering a power tool will increase the risk of electric shock.
- d) **Do not abuse the cord. Never use the cord for carrying, pulling or unplugging the power tool. Keep cord away from heat, oil, sharp edges or moving parts.** Damaged or entangled cords increase the risk of electric shock.
- e) **When operating a power tool outdoors, use an extension cord suitable for outdoor use.** Use of a cord suitable for outdoor use reduces the risk of electric shock.

## 3. PERSONAL SAFETY

- a) **Stay alert, watch what you are doing and use common sense when operating a power tool. Do not use a power tool while you are tired or under the influence of drugs, alcohol or medication.** A moment of inattention while operating power tools may result in serious personal injury.
  - b) **Use personal protective equipment. Always wear eye protection.** Protective equipment such as dust mask, non-skid safety shoes, hard hat, or hearing protection used for appropriate conditions will reduce personal injuries.
  - c) **Prevent unintentional starting. Ensure the switch is in the off-position before connecting to power source and/or battery pack, picking up or carrying the tool.** Carrying power tools with your finger on the switch or energising power tools that have the switch on invites accidents.
  - d) **Remove any adjusting key or wrench before turning the power tool on.** A wrench or a key left attached to a rotating part of the power tool may result in personal injury.
  - e) **Do not overreach. Keep proper footing and balance at all times.** This enables better control of the power tool in unexpected situations.
  - f) **Dress properly. Do not wear loose clothing or jewellery. Keep your hair, clothing and gloves away from moving parts.** Loose clothes, jewellery or long hair can be caught in moving parts.
  - g) **If devices are provided for the connection of dust extraction and collection facilities, ensure these are connected and properly used.** Use of these devices can reduce dust-related hazards.
- ## 4. POWER TOOL USE AND CARE
- a) **Do not force the power tool. Use the correct power tool for your application.** The correct power tool will do the job better and safer at the rate for which it was designed.
  - b) **Do not use the power tool if the switch**

**does not turn it on and off.** Any power tool that cannot be controlled with the switch is dangerous and must be repaired.

- c) **Disconnect the plug from the power source and/or the battery pack from the power tool before making any adjustments, changing accessories, or storing power tools.** Such preventive safety measures reduce the risk of starting the power tool accidentally.
- d) **Store idle power tools out of the reach of children and do not allow persons unfamiliar with the power tool or these instructions to operate the power tool.** Power tools are dangerous in the hands of untrained users.
- e) **Maintain power tools. Check for misalignment or binding of moving parts, breakage of parts and any other condition that may affect the power tools operation. If damaged, have the power tool repaired before use.** Many accidents are caused by poorly maintained power tools.
- f) **Keep cutting tools sharp and clean.** Properly maintained cutting tools with sharp cutting edges are less likely to bind and are easier to control.
- g) **Use the power tool, accessories and tool bits etc. in accordance with these instructions and in the manner intended for the particular type of power tool, taking into account the working conditions and the work to be performed.** Use of the power tool for operations different from those intended could result in a hazardous situation.

## 5. SERVICE

- a) **Have your power tool serviced by a qualified repair person using only identical replacement parts.** This will ensure that the safety of the power tool is maintained.

## ADDITIONAL SAFETY INSTRUCTIONS FOR YOUR SANDER

1. Never use this sander for wet sanding or liquid polishing. Failure to follow this rule may result in risk of electrical shock.

2. Always wear eye protectors when using this sander.
3. Always wear a dust mask when using this sander.
4. Always inspect and remove all nails and screws etc from lumber before sanding.
5. Always check walls and ceiling to avoid hidden power cables and pipes. A metal detector can be obtained from any good DIY store for this purpose.
6. If possible, ensure the workpiece is firmly clamped to prevent movement.
7. Your sander is a hand held tool, do not clamp your finishing sander.
8. Never stop the sander by applying a force to the base plate.
9. Only use sanding paper in good condition. Do not use torn or worn sanding paper.
10. Do not sand magnesium material due to the risk of fire.
11. Do not sand material including asbestos due to a health rise.
12. Do not sand lead based paint due to the rise of lead poisoning.
13. Do not eat or drink in the working area of the sander.
14. Do not allow people to enter the working area without wearing a dust mask.
15. Where possible, seal off the working area to contain the dust for later removal.

**WARNING: Some dust particles created by power sanding, sawing, grinding, drilling and other construction jobs contain chemicals known to cause cancer, birth defects or other reproductive harm. Some examples of these chemicals are:**

- Lead from lead-based paints.
  - Crystalline silica from bricks and cement and other masonry products.
  - Arsenic and chromium from chemically treated lumber.
- Your risk from these exposures varies, depending upon how often you do this type of work. To reduce your exposure to these chemicals:
- Work in a well ventilated area.
  - Work with approved safety equipment, such as those dust masks that specially designed to filter out microscopic particles and use the dust extraction facility at all time.

## DOUBLE INSULATION:

The tool is double insulated. This means that all the external metal parts are electrically insulated from the mains power supply. This is done by placing insulation barriers between the electrical and mechanical components making it unnecessary for the tool to be earthed.

## IMPORTANT NOTE

Be sure the supply is the same as the voltage given on the rating plate. The tool is fitted with a two-core cable and plug.  
Remove the mains plug from socket before carrying out, any adjustment or servicing.

The label on your tool may include the following symbols:

V -----	Volts
A -----	Amperes
Hz -----	Hertz
W -----	Watts
~ -----	Alternating current
n <sub>o</sub> -----	No load speed
min -----	Minutes
.../min-----	Revolutions or reciprocation per minute

## IV - SYMBOLS



Read the manual



Warning



Double insulation



Wear dust mask



Wear eye protection



Wear ear protection

## V - Accessories

Sanding paper (2pcs 80grit, 2pcs 100grit and 2pcs 120grit)	6pcs
Dust box	1pc
Dust bag	1pc

We recommend that you purchase your accessories from the same store that sold you the tool. Use good quality accessories marked with a well-known brand name. Choose the type according to the work you intend to undertake. Refer to the accessory packaging for further details. Store personnel can assist you and offer advice.

## VI - Operation

**WARNING:** Before using your sander be sure to read the instruction manual carefully.

### 1

#### FITTING THE SANDING PAPER (See Fig1&2)

Sanding paper is easily attached on the pad of your sander. Fit the paper over the pad so that it covers the entire area, push and slightly twist to make sure the coated sanding paper is snug on the pad.

Make sure the sanding paper is even with the edges and that the dust collection holes in the pad and sanding paper is aligned and that the sanding paper is taut on the pad (See Fig1). Remove the abrasive paper by pinching an edge and peeling off (See Fig2).

**WARNING:** Always switch off and unplug from the mains before making any adjustment.

### 2

#### SWITCHING ON AND OFF (See Fig3)

Depress the on/off trigger and hold; the sander will start. Release the trigger to stop. For prolonged use, it is possible to lock the on/off trigger by pushing the trigger lock into the locked position. To release, depress the trigger.

### 3

#### VARIABLE SPEED CONTROL SWITCH (See Fig4)

Speed can be adjusted by turning the variable speed wheel on On/off trigger. The arrow on trigger indicates the direction to increase or

decrease speed.

### 4

#### USING THE SANDER (See Fig5)

**NOTE:** If you see some sparks flashing in the ventilation slots do not panic, this is normal and will not damage the tool.

Be sure to hold the sander firmly whilst it is on and apply it gently to the work; it may kick on first contact. Hold the sander so that it is flat on the work and move slowly, preferably in parallel lines, circles, or crosswise movements. When you first turn it on, make sure that your finger remains on the switch so you can STOP the sander in case there is a problem.

Upon completion of sanding operation, turn sander off and wait until it comes to a complete stop before removing from workpiece.

Flush sanding can be performed with your sander. The front edge of your sander allows flush sanding.

The sander should run smoothly. Strange or unnatural noise should be investigated and corrected before operating the sander further. Regularly check the condition of the abrasive paper and replace when worn for best results. Always keep the machine moving so the finish of your work stays consistent. If you stay in one place too long, then the sander may produce a depression in the wood that will compromise your finish.

### 5

#### DUST COLLECTION BOX AND DUST BAG (See Fig6)

our sander is equipped with a detachable dust collection box, which has a filter on its cover. It can be installed by slipping it into the blower exhaust. Sanding dust is drawn up through the holes of the sanding disc pad to collect in the dust box during sanding operation.

Due to our policy of continuous product improvement, we have added an additional dust bag for use when operating the sander for prolonged periods.

**CAUTION:** To prevent the possibility of sanding dust or foreign body being thrown into your face or eyes, never attempt to use your sander without the dust box/bag properly installed.

### 6

#### EMPTY DUST BOX OR DUST BAG (See Fig7)

For more efficient operation, empty dust box or

dust bag every 5-10mins. This will permit the air to flow through the bag better. Remove dust box from sander and shake out dust.

For a more thorough cleaning of the dust box, remove dust box cover from dust box and shake out dust.

## VII - Working hints for your sander

---

1. Your sander is useful for working on wood, metal, painted surface. It will smooth surfaces prior to painting, even where fillers have been used and left proud.
2. Your sander is best suited to large flat areas such as doors but can also be used on skirting boards, windows, etc, provided they are accessible.
3. Different types of sanding paper will allow the sander to meet various needs. Different grades of sanding paper are available, the higher grade number, the finer the grit. For rough work start with a low grade of grit (i.e. 60 grade) and change to a higher, finer grade (i.e. 100 or 120) for finishing. If you use a fine grade for rough surfaces it will soon clog and need changing.
4. At all times, let the sander do the work-do not force it or apply excessive pressure to the sanding paper or it could wrinkle or tear. Preferably, use a light circular motion.
5. If the surface shows excessive making from the abrasive motion, you may be using a grit which is too coarse or applying too much pressure.

## VIII - Maintenance

---

1. Your power tool requires no additional lubrication or maintenance. There are no user serviceable parts in your power tool.
2. Never use water or chemical cleaners to clean your power tool. Wipe clean with a dry cloth.
3. Always store your power tool in a dry place.
4. Keep the motor ventilation slots clean.
5. If you see some sparks flashing in the ventilation slots, this is normal and will not damage your power tool.

6. If the supply cord is damaged, it must be replaced by the manufacturer, its service agent or similarly qualified persons in order to avoid a hazard.

## IX - Troubleshooting

---

1. If your sander will not operate, check the power at the mains plug.
2. If the sander does not abrade surface, checking the sanding paper. If the sanding paper have been worn, replace the new paper and try again. The paper must be kept in a dry place, if it is allowed to become damp, the abrasive particles will lose their adhesion to the backing paper and will not abrade.
3. If the sander dose not move smoothly, The sanding paper may be loose, damaged or wrinkled. Replace and try again.
4. If a fault can not be rectified return the sander to an authorized dealer for repair.

## X - Warranty

---

This product is warranted for a 2-year period for home domestic use from the date of the original purchase. If found to be defective in materials or workmanship, the tool or the offending faulty component will be replaced free of charge with another of the same item. A small freight charge may apply.

The warranty replacement unit only made available by returning the tool to the place of purchase with a confirmed register receipt. Proof of purchase is essential.

We reserve the right to reject any claim where the purchase cannot be verified.

This warranty does not include damage or defects to the tool caused by or resulting from abuse, accidents, alterations or commercial or business use.