



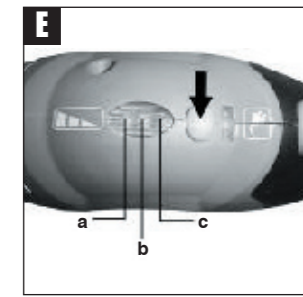
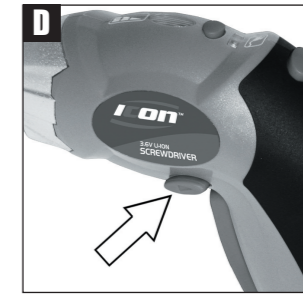
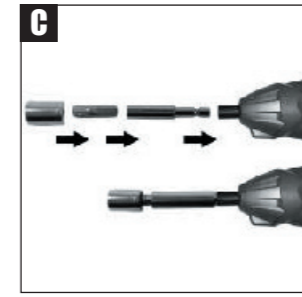
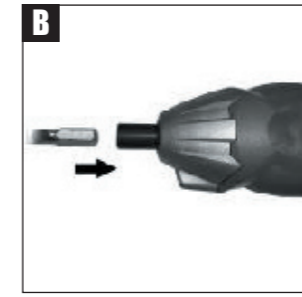
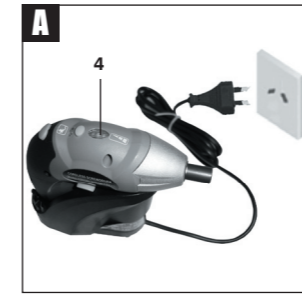
SAFETY AND OPERATING MANUAL

3.6V LI-ION SCREW DRIVER

IC36L



Thank you for purchasing an Icon product. We are confident that this product will meet and exceed your expectations of quality and reliability. Please take the time to carefully read this entire instruction manual before using your new product. Take note of the safety precautions contained herein.



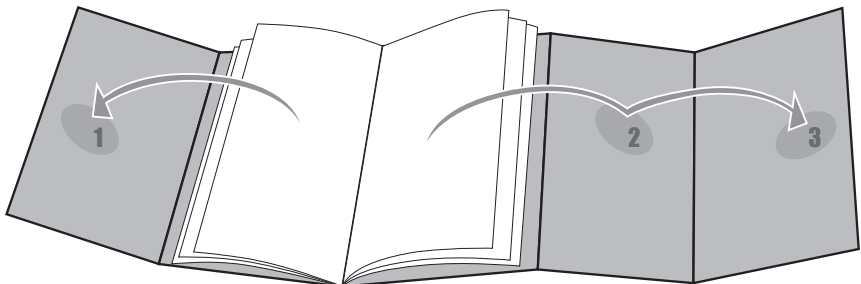
Contents

I -	Component list	1
II -	Technical specifications	2
III -	Safety instructions	2
IV -	Symbols	4
V -	Accessories	5
VI -	Recharging batteries	5
VII -	Operating instructions	5
VIII -	Maintenance	6
IX -	Warranty	6

I - Component List

1. Chuck
2. Battery capacity indicator
3. Battery capacity indicator switch
4. Charging indicator
5. Sight light switch
6. Soft handle
7. On / Off switch
8. Forward / Reverse switch
9. Sight light
10. Battery charging unit
11. Bits holder
12. Bits

Not all the accessories illustrated or described are included in standard delivery.



II - Technical specifications

Charger voltage:	230-240V~ 50 Hz
Battery voltage:	3.6V DC
No load speed:	180 /min
Battery capacity:	1000mAh Li-ion
Maximum torque:	3 N.m
Weight:	0.3 kg
Normal charging time:	3 ~ 5 hours

NOISE / VIBRATION INFORMATION

A weighted sound pressure	68dB (A)
A weighted sound power	79dB (A)
Wear ear protection when sound pressure is over	85dB (A)
Typical weighted vibration:	0.331m/s ²

III - Safety instructions



WARNING: Read all safety warnings and all instructions. Failure to follow the warnings and instructions may result in electric shock, fire and/or serious injury.

Save all warnings and instructions for future reference.

The term “power tool” in the warnings refers to your mains-operated (corded) power tool or battery-operated (cordless) power tool.

1. WORK AREA SAFETY

- Keep work area clean and well lit.** Cluttered or dark areas invite accidents.
- Do not operate power tools in explosive atmospheres, such as in the presence of flammable liquids, gases or dust.** Power tools create sparks which may ignite the dust or fumes.
- Keep children and bystanders away while operating a power tool.** Distractions can cause you to lose control.

2. ELECTRICAL SAFETY

- Power tool plugs must match the outlet. Never modify the plug in any way. Do not use any adapter plugs with earthed (grounded) power tools.** Unmodified plugs and matching outlets will reduce risk of electric shock.
- Avoid body contact with earthed or grounded surfaces such as pipes, radiators, ranges and refrigerators.** There

is an increased risk of electric shock if your body is earthed or grounded.

- Do not expose power tools to rain or wet conditions.** Water entering a power tool will increase the risk of electric shock.
- Do not abuse the cord. Never use the cord for carrying, pulling or unplugging the power tool. Keep cord away from heat, oil, sharp edges or moving parts.** Damaged or entangled cords increase the risk of electric shock.
- When operating a power tool outdoors, use an extension cord suitable for outdoor use.** Use of a cord suitable for outdoor use reduces the risk of electric shock.
- Recommendation for the use of a residual current device with a rated residual current of 30 mA or less.**

3. PERSONAL SAFETY

- Stay alert, watch what you are doing and use common sense when operating a power tool. Do not use a power tool while you are tired or under the influence of drugs, alcohol or medication.** A moment of inattention while operating power tools may result in serious personal injury.
- Use personal protective equipment. Always wear eye protection.** Protective equipment such as dust mask, non-skid safety shoes, hard hat, or hearing

protection used for appropriate conditions will reduce personal injuries.

- Prevent unintentional starting. Ensure the switch is in the off-position before connecting to power source and/or battery pack, picking up or carrying the tool.** Carrying power tools with your finger on the switch or energising power tools that have the switch on invites accidents.
 - Remove any adjusting key or wrench before turning the power tool on.** A wrench or a key left attached to a rotating part of the power tool may result in personal injury.
 - Do not overreach. Keep proper footing and balance at all times.** This enables better control of the power tool in unexpected situations.
 - Dress properly. Do not wear loose clothing or jewellery. Keep your hair, clothing and gloves away from moving parts.** Loose clothes, jewellery or long hair can be caught in moving parts.
 - If devices are provided for the connection of dust extraction and collection facilities, ensure these are connected and properly used.** Use of these devices can reduce dust-related hazards.
- ### 4. POWER TOOL USE AND CARE
- Do not force the power tool. Use the correct power tool for your application.** The correct power tool will do the job better and safer at the rate for which it was designed.
 - Do not use the power tool if the switch does not turn it on and off.** Any power tool that cannot be controlled with the switch is dangerous and must be repaired.
 - Disconnect the plug from the power source and/or the battery pack from the power tool before making any adjustments, changing accessories, or storing power tools.** Such preventive safety measures reduce the risk of starting the power tool accidentally.
 - Store idle power tools out of the reach of children and do not allow persons unfamiliar with the power tool or these instructions to operate the power tool.** Power tools are dangerous in the hands of untrained users.

- Maintain power tools. Check for misalignment or binding of moving parts, breakage of parts and any other condition that may affect the power tools operation. If damaged, have the power tool repaired before use.** Many accidents are caused by poorly maintained power tools.
- Keep cutting tools sharp and clean.** Properly maintained cutting tools with sharp cutting edges are less likely to bind and are easier to control.
- Use the power tool, accessories and tool bits etc. in accordance with these instructions and in the manner intended for the particular type of power tool, taking into account the working conditions and the work to be performed.** Use of the power tool for operations different from those intended could result in a hazardous situation.

5. BATTERY TOOL USE AND CARE

- Ensure the switch is in the off position before inserting battery pack.** Inserting the battery pack into power tools that have the switch on invites accidents.
- Recharge only with the charger specified by the manufacturer.** A charger that is suitable for one type of battery pack.
- Use power tools only with specifically designated battery packs.** Use of any other battery packs may create a risk of injury and fire.
- When battery pack is not in use, keep it away from other metal objects like paper clips, coins, keys, nails, screw, or other small metal objects that can make a connection from one terminal to another.** Shorting the battery terminals together may cause burns or fire.
- Under abusive conditions, liquid may be ejected from the battery; avoid contact, if contact accidentally occurs, flush with water. If liquid contacts eyes, additionally seek medical help.** Liquid ejected from the battery may cause irritation or burns.

6. SERVICE

- Have your power tool serviced by a qualified repair person using only identical replacement parts.** This will

ensure that the safety of the power tool is maintained.

IV - Symbols



Read the manual



Warning



Indoor use only



Wear dust mask



Wear eye protection



Wear ear protection



Do not expose to rain or water



Do not burn



3-5 hours charging time



RCM approval

ADDITIONAL SAFETY INSTRUCTIONS FOR YOUR SCREWDRIVER

1. Battery leakage may occur under extreme usage or temperature conditions. If the fluid comes into contact with the eyes, flush with water for several minutes and contact a doctor immediately.
2. Never burn batteries, they can explode in a fire.
3. Do not charge a leaking battery.
4. Use of an attachment and charger not recommended or sold by the screwdriver manufacturer may result in a risk of fire, electric shock, or injury to persons.
5. Before you lay down the screwdriver, make sure that all moving parts have come to a stop.
6. Avoid frequent stalling when working, as this could damage the batteries.
7. Only connect the charging device to an AC supply.
8. Charge battery only with the appropriate charging device.
9. The charging device and the screwdriver must be protected from moisture!
10. Do not use the charging device outdoors.
11. Do not store or use the tool and battery cell in locations where the temperature may reach or exceed 40°C. (such as outside sheds or metal building in summer)
12. Always charge the battery cell between temperatures 0°C to 30°C. Ideal charging temperature is 18°C to 24°C.
13. Do not short out the contacts of battery or charger.
14. Respect the polarity “+/-” when charging.



Warnings for the charger:

1. Before using the tool, read the instruction book carefully.
2. Charger is for indoor use only.
3. Do not expose to rain or water.
4. If the supply cord is damaged, it must be replaced by the manufacturer, its service agent or similarly qualified person in order to avoid a hazard.

V - Accessories

3-5hr charger 1
screwdriver bits 9
3 x flat: 4,5,6mm
3 x cross: PZ1,PZ2,PZ3
3 x Phillips: PH1,PH2,PH3
We recommend that you purchase your accessories from the same store that sold you the tool. Use good quality accessories marked with a well-known brand name. Choose the type according to the work you intend to undertake. Refer to the accessory packaging for further details. Store personnel can assist you and offer advice.

VI - Recharging batteries



NOTE: Before using the tool, read the instruction book carefully.

1

CHARGING THE BATTERY

The battery charger supplied is matched to the Li-ion battery installed in the machine. Do not use another battery charger. The Li-ion battery is protected against deep discharging. When the battery is empty, the machine is switched off by means of a protective circuit: The tool holder no longer rotates. In a warm environment or after heavy use, the battery pack may become too hot to permit charging. Allow time for the battery to cool down before recharging. When the battery is charged for the first time and after prolonged storage, the battery will only accept approximately 60% charge. However, after several charge and discharge cycles the battery will accept a 100% charge.

2

B) IMPORTANT NOTES FOR CHARGING THE BATTERY

The battery in your new Screwdriver is not charged when it leaves the plant. Therefore it must be charged for 3–5 hours before using the first time!

3

CHARGING (SEE FIG.A)

Plug charger plug into a suitable power outlet and afterwards place the screwdriver onto the battery charger, the charging indicator (Orange) (4) will illuminate at this time. Let the battery charge for 3–5hours. This will give the battery a full charge, the charger indicator (orange) will go out when charging is complete. Then unplug the charging plug from the wall socket and remove the screwdriver from the battery charger, the screwdriver should be ready to use.

Important:

When charging, the charger and screwdriver may become warm to the touch, this is normal and does not indicate a problem.

VII - Operation instructions

Inspect the screwdriver before using to ensure all parts are running smoothly and there no abnormal sounds or sparks. Before driving fasteners, check behind walls for wire, other electrical hazards or plumbing. Clear the work area of all parts and debris that may cause injury by flying objects. Securely fix the object to be fastened in a vice or otherwise clamp to avoid injury. Do not attempt to hold work-piece by hand.

1

FITTING AND REMOVING BITS

To use any one of the short bits supplied, insert the bit into the chuck as far as possible. To remove the bit, simply pull it out of the chuck. (See Fig.B)



2


FITTING AND REMOVING SOCKETS (SOLD SEPARATELY)

To use the socket, you can simply refer part of "fitting and removing Bits". Just insert the socket into adaptor and then put them together into bit holder. (See Fig.C)

3

FORWARD / REVERSE SWITCH (SEE FIG.D)

For drilling and screw driving use forward rotation marked “” (lever is moved to the left). Only use reverse rotation marked “” (lever is moved to the right) to remove screws or release a jammed drill bit.

 **Warning:**
Never change the direction of rotation when the chuck is rotating. Wait until it has stopped.

4

BATTERY CAPACITY INDICATOR (SEE FIG.E)

You can press the battery capacity indicator switch (3) to show the battery capacity. When the battery capacity indicator (2) lights up red the battery has less than 30% of its capacity and should be charged.

- a: Full power (green)
- b: Full power but will require charging shortly (yellow)
- c: Needs charging (red)

5

USING THE SIGHT LIGHT (SEE FIG.F)

The sight light allows you to keep a clear view under less illuminated circumstances. To turn on the light simply press the sight light switch. (Repeat to turn the light off again)

6

AUTOMATIC SPINDLE LOCK

The screwdriver chuck (1) is locked when the On / Off switch (7) is not pressed.

This enables screws to be screwed in, even when the battery is empty and allows for the machine to be used as a manual screwdriver. Important:

When using it as a manual tool, do not press the On / Off switch (7). Otherwise the power tool can be damaged.

VIII - Maintenance

Remove the plug from the socket before carrying out any adjustment, servicing or maintenance.

Your tool requires no additional lubrication or maintenance.

There are no user serviceable parts in your tool. Never use water or chemical cleaners to clean your tool. Wipe clean with a dry cloth. Always store your tool in a dry place. Keep the

motor ventilation slots clean. Keep all working controls free of dust. Occasionally you may see sparks through the ventilation slots. This is normal and will not damage your power tool.

IX - Warranty

This product is warranted for a 2-year period for home domestic use from the date of the original purchase. If found to be defective in materials or workmanship, the tool or the offending faulty component will be replaced free of charge with another of the same item. A small freight charge may apply.

The warranty replacement unit only made available by returning the tool to the place of purchase with a confirmed register receipt. Proof of purchase is essential.

We reserve the right to reject any claim where the purchase cannot be verified.

This warranty does not include damage or defects to the tool caused by or resulting from abuse, accidents, alterations or commercial or business use.