



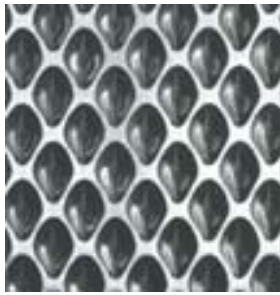
RIMEX COLOURED STAINLESS STEEL

STEELFORT



Green Pearl

Sheet Size:
2500 x 1250 x 0.60mm



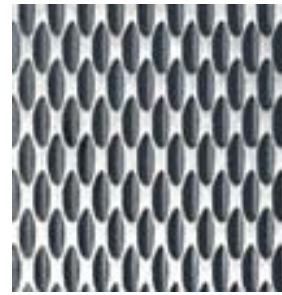
Charcoal Pearl

Sheet Size:
2500 x 1250 x 0.60mm



Blue Pearl

Sheet Size:
2500 x 1250 x 0.60mm



Charcoal Prism

Sheet Size:
2500 x 1250 x 0.60mm



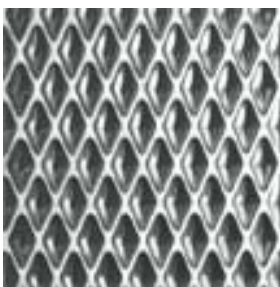
Gold Prism

Sheet Size:
2500 x 1250 x 0.60mm



Blue Pyramid

Sheet Size:
2500 x 1250 x 0.60mm



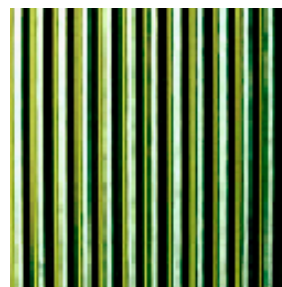
Charcoal Pyramid

Sheet Size:
2500 x 1250 x 0.60mm



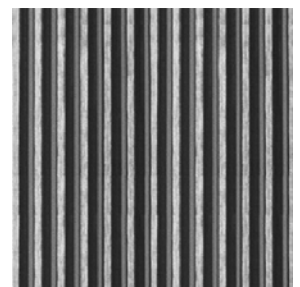
Gold Pyramid

Sheet Size:
2500 x 1250 x 0.60mm



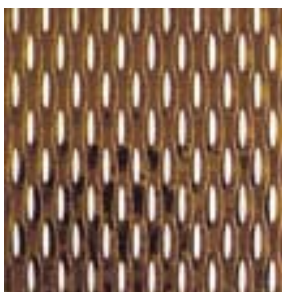
Green Pinstripe

Sheet Size:
2500 x 1250 x 0.60mm



Charcoal Pinstripe

Sheet Size:
2500 x 1250 x 0.60mm



Bronze Pippin

Sheet Size:
2500 x 1250 x 0.60mm



Blue Pippin

Sheet Size:
2500 x 1250 x 0.60mm



Gold Poppy

Sheet Size:
2500 x 1250 x 0.60mm



Bronze Satin

Sheet Size:
2500 x 1250 x 0.90mm



Charcoal Satin

Sheet Size:
2500 x 1250 x 0.90mm



Blue Mirror

Sheet Size:
2500 x 1250 x 0.90mm



Bronze Mirror

Sheet Size:
2500 x 1250 x 0.90mm



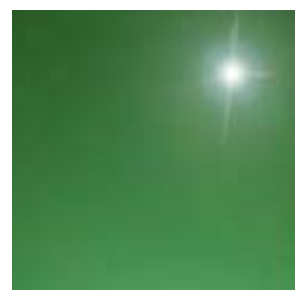
Gold Mirror

Sheet Size:
2500 x 1250 x 0.90mm



Black Mirror

Sheet Size:
2500 x 1250 x 0.90mm



Green Mirror

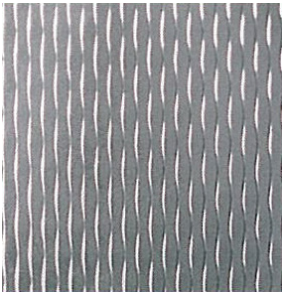
Sheet Size:
2500 x 1250 x 0.90mm

Craig Beissel Ph: 027 505 0731

**500 Rangitikei Street | Private Bag 11045 | Palmerston North 4442 | New Zealand
Telephone 06 350 1350 | Facsimile 06 356 1507 | Website www.steelfort.co.nz**

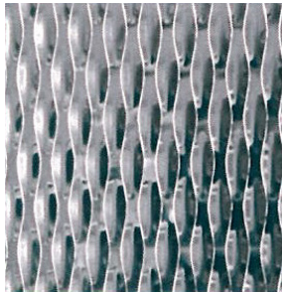


RIMEX STAINLESS FINISHES



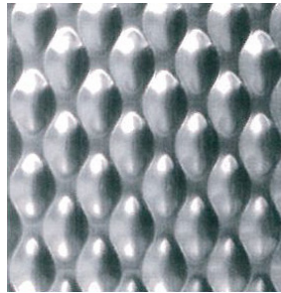
2WL

Sheet Size:
2500 x 1250 x 0.60mm



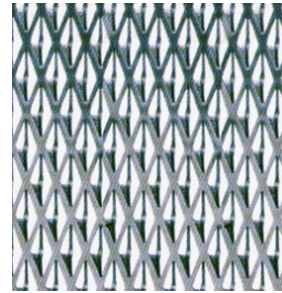
5WL

Sheet Size:
2438 x 1219 x 0.55mm
2438 x 1219 x 1.20mm
3048 x 1219 x 1.20mm



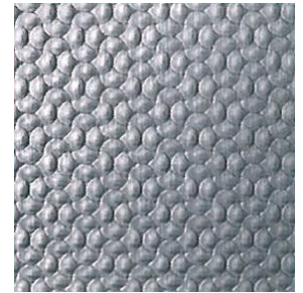
6WL

Sheet Size:
2438 x 1219 x 0.55mm
2438 x 1219 x 1.20mm



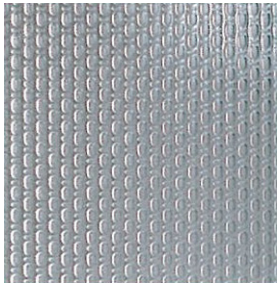
7GM

Sheet Size:
2500 x 1250 x 0.60mm



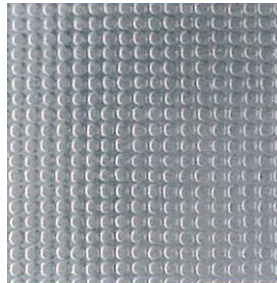
13SD

Sheet Size:
2500 x 1250 x 0.60mm



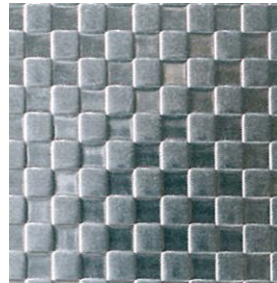
Linen

Sheet Size:
2500 x 1250 x 0.80mm
2438 x 1250 x 1.20mm
3048 x 1250 x 1.20mm
3658 x 1250 x 1.20mm
5000 x 1250 x 1.20mm



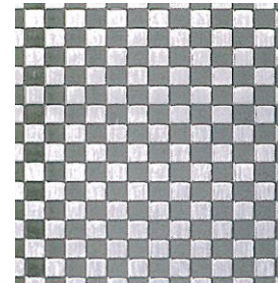
Canvas

Sheet Size:
2500 x 1250 x 0.80mm
2438 x 1250 x 1.20mm
3048 x 1250 x 1.20mm
3658 x 1250 x 1.20mm



Squares

Sheet Size:
2500 x 1250 x 0.80mm
2438 x 1250 x 1.20mm
3048 x 1250 x 1.20mm
3658 x 1250 x 1.20mm
5000 x 1250 x 1.20mm



Checks

Sheet Size:
2500 x 1250 x 0.80mm
2438 x 1250 x 1.20mm
3048 x 1250 x 1.20mm
3658 x 1250 x 1.20mm
5000 x 1250 x 1.20mm



Cambridge

Sheet Size:
2438 x 1219 x 0.55mm

Forms of Supply

METAL OPTIONS

Stainless Steel: All grades available but is only stocked in 304 grade.
Other metals: Available on request - Aluminium, Copper, Brass, etc

FINISHES

Stainless Steel: 2B, BA, Satin, Mirror, Coloured, and Granex (Bead Blasted).
Please check current availability prior to specifying or quoting your project.

SHEET SIZES

Standard widths and lengths are as indicated. Please call us to discuss the potential for Cut to Length options, or custom manufacturing to your project requirements.



Super Mirror

Sheet Size:
2438 x 1219 x 1.00mm
2438 x 1219 x 1.50mm

Why use Rimex Stainless Steel Finishes?

Rimex textured, embossed, and patterned metal finishes provide a large selection of standard designs that are modern and attractive in appearance. Manufacturing methods enable unique custom designs to become reality.

Patterned finishes will:

- Hide scratches, dents and other impact damage unlike plain flat and polished metal which too readily reveal the lightest of impacts.
- Improve optical flatness, reduce oil canning, and reduce glare - ideal for claddings, elevator doors and interiors, shop fitouts, and bench tops.
- As a direct consequence of the strength and durability benefits provided by the Patterned Finishes, long term cost savings are provided in maintenance and replacement costs in applications such as elevators, columns, doors, partitions, etc.

Patterned Metal Finishes from Rimex are tried and tested, having been used globally for over 40 years because of their durable anti-vandal properties.

With coloured textured sheets, the peaks are highlighted to improve the durability of the contact area. Patterns can also be produced non-highlighted to achieve a different visual effect.

Colourtex material is colourfast and will not produce poisonous fumes during fire as the colours are inherently part of the stainless steel. With the life cycle cost and fire rating advantages of stainless steel, along with being 100% recyclable, Rimex Colourtex is the ultimate "Green Building Material".